

Diversified Power, Inc. Skid Steer Condition Report

	Inspection Date	1/17/2012	Equipment #	MC2002
Make:	Cat	Model	246C	Year:
Type of Equip.	Skid Steer	Hour Meter:	2960.6	S/N: CAT0246CVJAY02857
Bucket Widths	60"	Tires:	12 - 16.5	
Ratings: N/A, Excellent, Good, Satisfactory, Fair, Poor		Comments		
Overall Appearance:	Satisfactory	Some scuffs and scratches.		
Operating Condition:	Satisfactory	Machine functioned normally during a limited check.		
Engine		Oil / fuel leak at front of engine. Engine cranks and runs normally.		
Mfg:	Cat			
Run / Start:	Good			
Oil Leaks:	Minor			
Batteries:	Satisfactory			
Cooling System:	Satisfactory			
Hydraulic		Cylinders on grapple leaking. Possible leak under cab.		
Pumps:	Satisfactory			
Valves:	Satisfactory			
Lines:	Satisfactory			
Oil Leaks:	Yes			
Tires				
Condition:	Satisfactory			
Size:	12 - 16.5			
Tread Remaining:	60%			
Bucket		Bucket welded to disconnect frame. Dent in bottom of bucket. Manual disconnect. Wear in bucket clamp cylinder pins and bushings.		
Condition:	Fair			
Teeth:	N/A			
Pins & Bushings:	Fair			
Cylinder:	Fair			
Boom		Wear in bucket dump and boom cylinder pins and bushings.		
Condition:	Satisfactory			
Pins & Bushings:	Wear noted			
Cylinders:	Fair			
Machine		Scuffs and scratches in paint. Hose seen protruding from bottom of machine. Skid plate missing.		
Sheet Metal:	Satisfactory			
Paint:	Fair			
Cab	OOPS	Seat bottom cracked & burned. Cab and headliner extremely dirty. Gages function normally. Safety bar switch not functioning normally.		
Door:	N/A			
Glass:	N/A			
Seat:	Poor			
Air Conditioner:	N/A			
Heater:	N/A			

Diversified Power, Inc. Skid Steer Condition Report

Inspection Date	1/17/2012	Equipment #	MC2002		
Make:	Cat	Model	246C	Year:	0
Type of Equip.	Skid Steer	Hour Meter	2960.6	S/N:	CAT0246CVJAY02857
Additional Comments:					



The information contained in this report is informative only. It is recommended that you conduct your own inspection prior to purchase. There is no warranty, express or implied and no warranty of fitness or merchantability.

Diversified Power, Inc. Skid Steer Condition Report

Inspection Date	1/17/2012	Equipment #	MC2002		
Make:	Cat	Model	246C	Year:	0
Type of Equip.	Skid Steer	Hour Meter	2960.6	S/N:	CAT0246CVJAY02857



The information contained in this report is informative only. It is recommended that you conduct your own inspection prior to purchase. There is no warranty, express or implied and no warranty of fitness or merchantability.

Diversified Power, Inc. Skid Steer Condition Report

Inspection Date	1/17/2012	Equipment #	MC2002		
Make:	Cat	Model	246C	Year:	0
Type of Equip.	Skid Steer	Hour Meter	2960.6	S/N:	CAT0246CVJAY02857

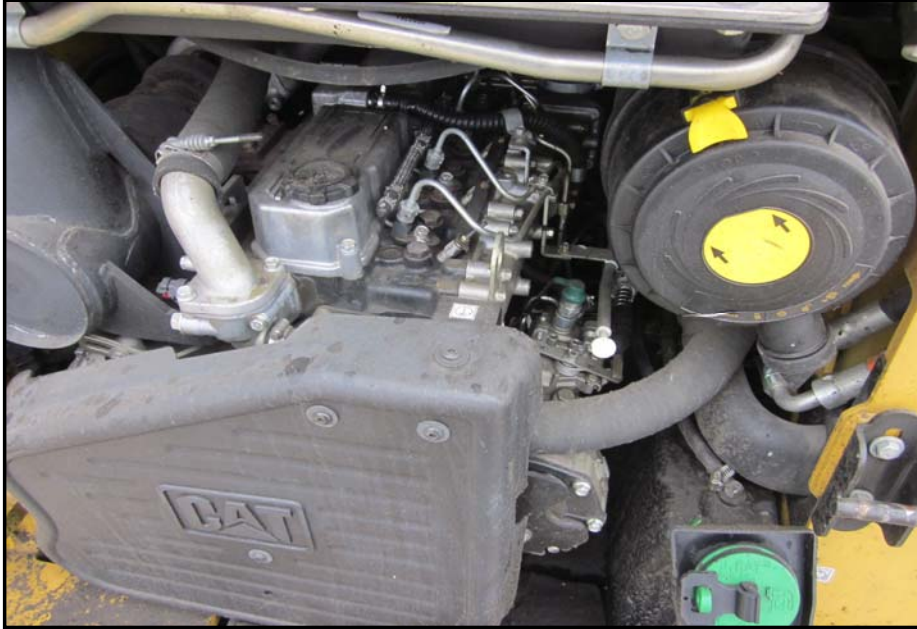


The information contained in this report is informative only. It is recommended that you conduct your own inspection prior to purchase. There is no warranty, express or implied and no warranty of fitness or merchantability.

Diversified Power, Inc.

Skid Steer Condition Report

Inspection Date	1/17/2012	Equipment #	MC2002		
Make:	Cat	Model	246C	Year:	0
Type of Equip.	Skid Steer	Hour Meter	2960.6	S/N:	CAT0246CVJAY02857



The information contained in this report is informative only. It is recommended that you conduct your own inspection prior to purchase. There is no warranty, express or implied and no warranty of fitness or merchantability.

Diversified Power, Inc. Skid Steer Condition Report

Inspection Date	1/17/2012	Equipment #	MC2002		
Make:	Cat	Model	246C	Year:	0
Type of Equip.	Skid Steer	Hour Meter	2960.6	S/N:	CAT0246CVJAY02857



The information contained in this report is informative only. It is recommended that you conduct your own inspection prior to purchase. There is no warranty, express or implied and no warranty of fitness or merchantability.

Diversified Power, Inc.

Skid Steer Condition Report

Inspection Date	1/17/2012	Equipment #	MC2002		
Make:	Cat	Model	246C	Year:	0
Type of Equip.	Skid Steer	Hour Meter	2960.6	S/N:	CAT0246CVJAY02857



The information contained in this report is informative only. It is recommended that you conduct your own inspection prior to purchase. There is no warranty, express or implied and no warranty of fitness or merchantability.

Diversified Power, Inc. Skid Steer Condition Report

Inspection Date	1/17/2012	Equipment #	MC2002		
Make:	Cat	Model	246C	Year:	0
Type of Equip.	Skid Steer	Hour Meter	2960.6	S/N:	CAT0246CVJAY02857

