

## Diversified Power, Inc.

### Concrete Pump Truck Condition Report

Inspection Date <b>2/8/2011</b>		Equipment # <b>MC1063</b>
Make: <b>Freightliner</b>	Model:	Year: Mileage: <b>263247</b>
Type of Equip.: <b>Pumper Truck</b>	Hour Meter: <b>7787</b>	VIN: <b>WL886729</b>
<b>Ratings are :  Not Applicable, Excellent, Good,  Satisfactory, Fair, Poor</b>		<b>Comments</b>
<b>Overall Appearance:</b>	<b>Fair</b>	
<b>Operating Condition:</b>	<b>Fair</b>	
<b>Engine:</b>		Series 60 - engine rebuilt 2005. Engine starts and runs.
Run/Start:	<b>Yes</b>	
Brand:	<b>Detroit Diesel</b>	
Liters:		
Horsepower:	<b>430 HP</b>	
Battery:	<b>Good</b>	
Oil leaks:	<b>Yes</b>	
Engine Brake:	<b>Yes</b>	
<b>Cab Interior:</b>	<b>Cab-over</b>	Driver's seat worn - upholstery worn.
Interior type:	<b>Daycab</b>	
Air Conditioner:	<b>Yes</b>	
Air Seat:	<b>Yes</b>	
Air Ride Cab:	<b>No</b>	
Tilt Wheel:	<b>No</b>	
<b>Truck:</b>		Cab tilt lock missing left side. Front bumper bent. Front left side bent. Headlight enclosure missing. Left top cab bent. Remote control battery needs replacing.
Sheet Metal:	<b>Fair</b>	
Paint:	<b>Fair</b>	
Drivetrain:	<b>Satisfactory</b>	
Steering:	<b>Satisfactory</b>	
<b>Transmission:</b>		
Type:	<b>Automatic</b>	
# of Speeds:	<b>5</b>	
Oil leaks:	<b>Yes</b>	
<b>Specifications:</b>		Front 2 steer axles - leaf spring. Rear 3 axles (Neway) air bag.
Front Axle Capacity:	<b>20,000 ea</b>	
Rear Axle Capacity:	<b>22,000 ea</b>	
Wheel Base:	<b>308"</b>	
Suspension:	<b>see notes</b>	
<b>Pump:</b>		1998 model. Pump operates. Controller not tested.
Brand:	<b>Schwing</b>	
Model:	<b>2023-4-KVM 52/48</b>	
Boom Length:		
Pump Hours:	<b>5287</b>	
Pump S/N:	<b>170516054</b>	

Condition Report continued on Page 2

The information contained in this report is informative only. It is recommended that you conduct your own inspection prior to purchase. There is no warranty, express or implied and no warranty of fitness or merchantability.

## Diversified Power, Inc. Concrete Pump Truck Condition Report

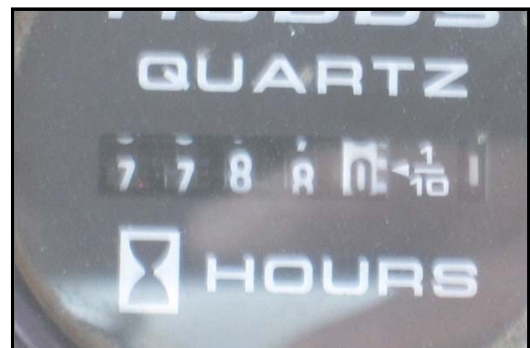
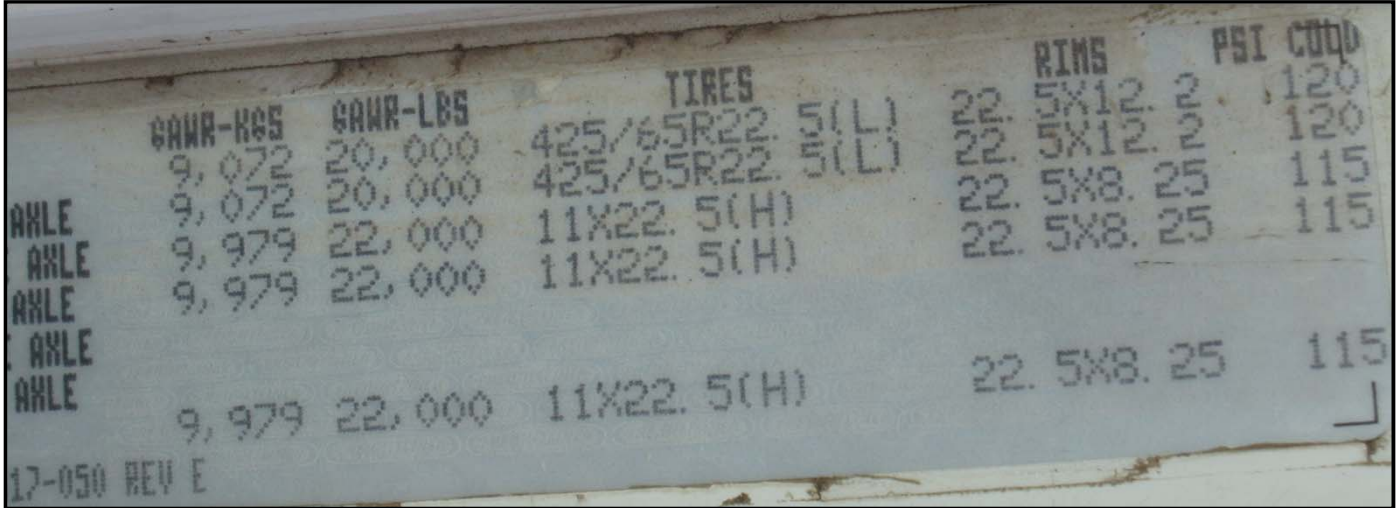
Inspection Date		2/8/2011		Equipment #		MC1063			
Make: <b>Freightliner</b>		Model:		Year:		Mileage: <b>263247</b>			
Type of Equip.: <b>Pumper Truck</b>		Hour Meter: <b>7787</b>		VIN: <b>WL886729</b>					
<b>1st Axle:</b>		NOTE: All tire tread depth measurements are in 32nds and are measured from drivers side to passengers side.							
Tire Size:								425 65R 22.5	
Tread Depth:								13 - 9	
Wheel Type:								Alum	
Brake %:		enclosed							
<b>2nd Axle:</b>									
Tire Size:		425 65R 22.5							
Tread Depth:		14 - 15							
Wheel Type:		Alum							
Brake %:		enclosed							
<b>3rd Axle:</b>									
Tire Size:		11R22.5							
Tread Depth:		14 - 14 - 8 - 8							
Wheel Type:		Alum outside							
Brake %:		enclosed							
<b>4th Axle:</b>									
Tire Size:		11R22.5							
Tread Depth:		14 - 14 - 14 - 14							
Wheel Type:		Alum outside							
Brake %:		enclosed							
<b>5th Axle:</b>									
Tire Size:		11R22.5							
Tread Depth:		14 - 14 - 14 - 14							
Wheel Type:		Alum outside							
Brake %:		25%							
<b>Additional Comments:</b>									



The information contained in this report is informative only. It is recommended that you conduct your own inspection prior to purchase. There is no warranty, express or implied and no warranty of fitness or merchantability.

## Diversified Power, Inc. Concrete Pump Truck Condition Report

	Inspection Date	2/8/2011	Equipment #	MC1063
Make:	Freightliner	Model:	Year:	Mileage: 263247
Type of Equip.:	Pumper Truck	Hour Meter:	7787	VIN: WL886729



The information contained in this report is informative only. It is recommended that you conduct your own inspection prior to purchase. There is no warranty, express or implied and no warranty of fitness or merchantability.

# Diversified Power, Inc.

## Concrete Pump Truck Condition Report

Inspection Date	2/8/2011	Equipment #	MC1063
Make:	Freightliner	Model:	
Type of Equip.:	Pumper Truck	Year:	Mileage: 263247
	Hour Meter: 7787	VIN:	WL886729



The information contained in this report is informative only. It is recommended that you conduct your own inspection prior to purchase. There is no warranty, express or implied and no warranty of fitness or merchantability.

# Diversified Power, Inc.

## Concrete Pump Truck Condition Report

Inspection Date	2/8/2011	Equipment #	MC1063
Make:	Freightliner	Model:	
Type of Equip.:	Pumper Truck	Year:	Mileage: 263247
	Hour Meter: 7787	VIN:	WL886729

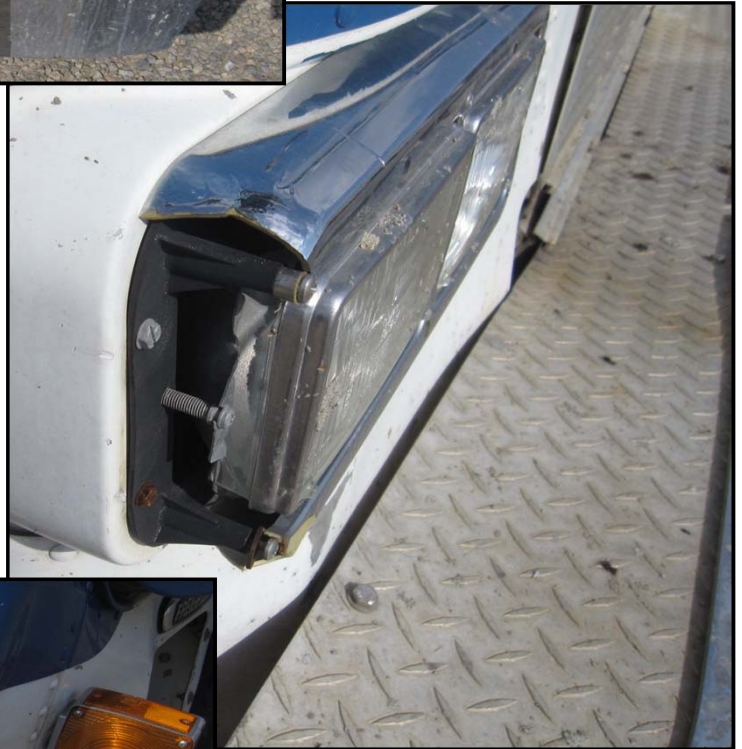


The information contained in this report is informative only. It is recommended that you conduct your own inspection prior to purchase. There is no warranty, express or implied and no warranty of fitness or merchantability.

# Diversified Power, Inc.

## Concrete Pump Truck Condition Report

Inspection Date	2/8/2011	Equipment #	MC1063				
Make:	Freightliner	Model:		Year:		Mileage:	263247
Type of Equip.:	Pumper Truck	Hour Meter:	7787	VIN:	WL886729		



The information contained in this report is informative only. It is recommended that you conduct your own inspection prior to purchase. There is no warranty, express or implied and no warranty of fitness or merchantability.

# Diversified Power, Inc.

## Concrete Pump Truck Condition Report

Inspection Date	2/8/2011	Equipment #	MC1063
Make:	Freightliner	Model:	
Type of Equip.:	Pumper Truck	Year:	Mileage: 263247
	Hour Meter: 7787	VIN:	WL886729



The information contained in this report is informative only. It is recommended that you conduct your own inspection prior to purchase. There is no warranty, express or implied and no warranty of fitness or merchantability.

# Diversified Power, Inc.

## Concrete Pump Truck Condition Report

	Inspection Date <b>2/8/2011</b>	Equipment # <b>MC1063</b>
Make: <b>Freightliner</b>	Model:	Year: Mileage: <b>263247</b>
Type of Equip.: <b>Pumper Truck</b>	Hour Meter: <b>7787</b>	VIN: <b>WL886729</b>

**SCHWING AMERICA INC.**  
 WHITE BEAR, MINNESOTA  
 PHONE: 612-429-0999  
 TWX: 910-563-3539  
 U. S. PATENTS: 3,146,721; 3,640,303; 3,409,334; 4,373,875

SUBSIDIARY OF **SCHWING**  
 HERNE 2 / G  
 PHONE: (02)  
 TELEX: 820

---

2023 - 4 KVM 52/48 SERIAL NO. 170516054

LBS. STROKES PER MINUTE 26 MAX.

UM HYDRAULIC PRESSURE 5075 SYSTEM 1 2900 SYSTEM 2

### BOOM PIPE INFORMATION

PUMPKIT MODEL: 130/80 X 2000 : 230

When configured for ROD side pumping, this unit will produce a maximum material pressure of: 1007 PSI

When configured for PISTON side pumping, this unit will produce a maximum material pressure of: N/A PSI


Maximum weight of boom pipeline WITHOUT CONCRETE is: 10.14 Pounds / foot

Maximum allowable bulk density of concrete to be pumped is: 150 Pounds / foot<sup>3</sup>

Maximum weight of boom pipeline INCLUDING CONCRETE is: 29.57 Pounds / foot

Pipeline v...  
 the thick...  
 if your pip...  
 this mac...  
 chart sho...

LENG...  
 (See p...)

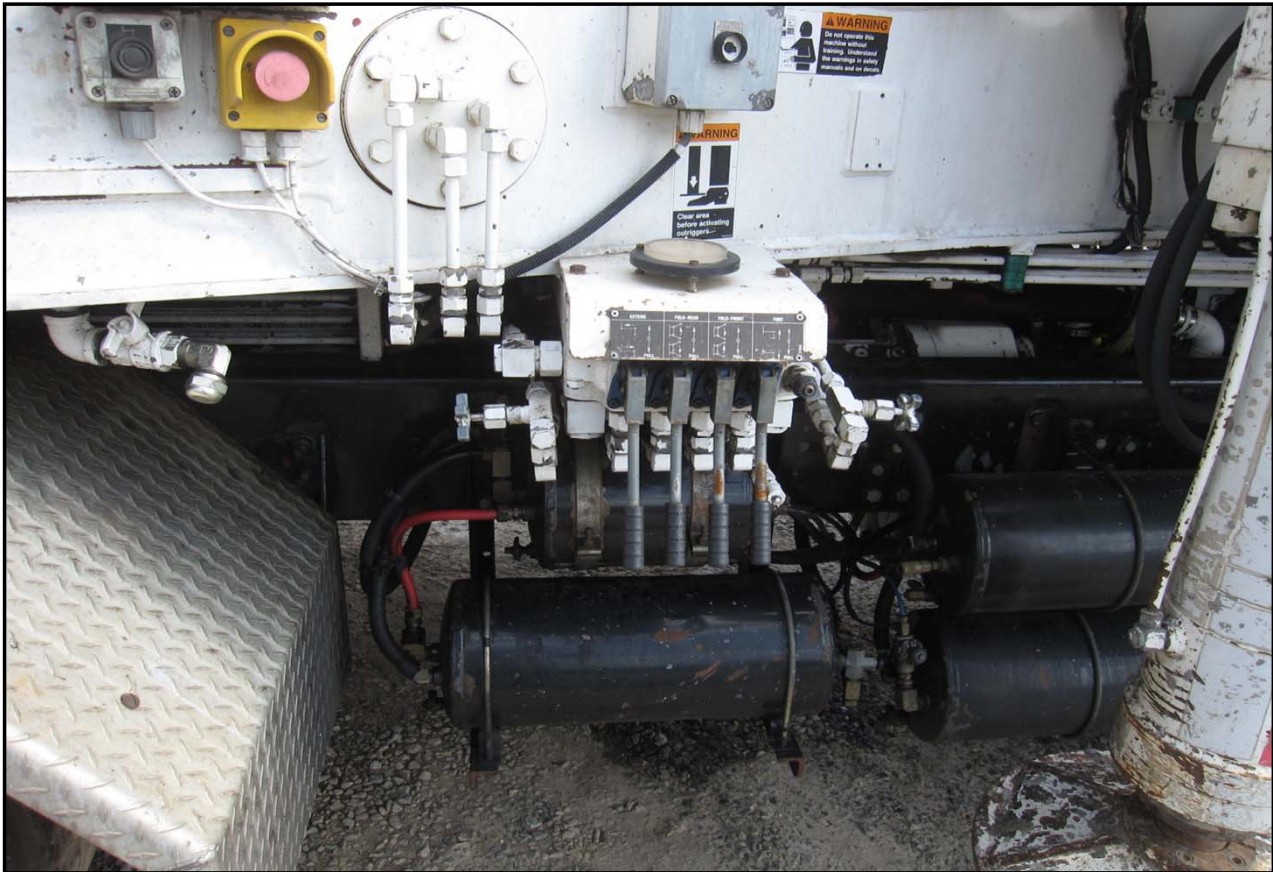



The information contained in this report is informative only. It is recommended that you conduct your own inspection prior to purchase. There is no warranty, express or implied and no warranty of fitness or merchantability.



# Diversified Power, Inc.

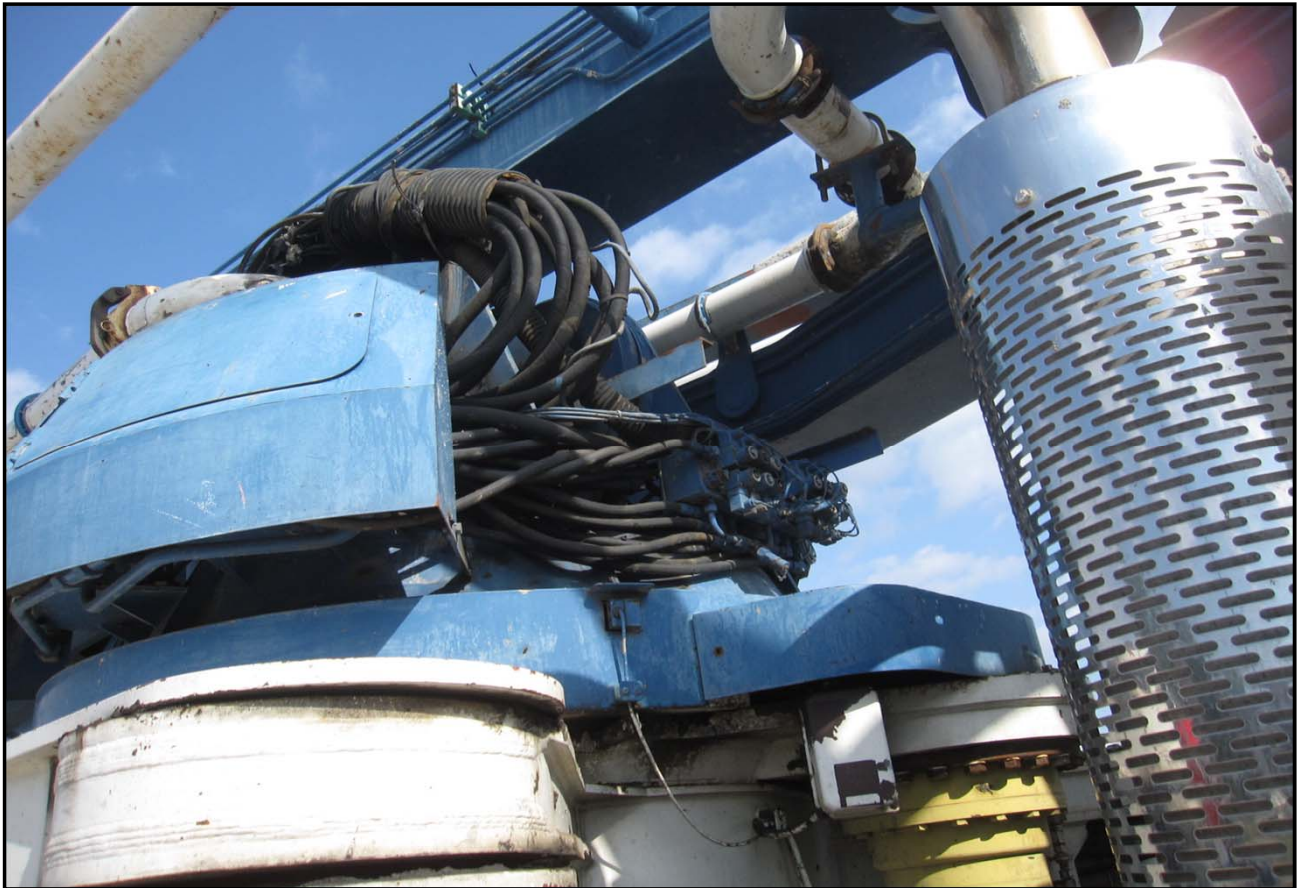
## Concrete Pump Truck Condition Report



The information contained in this report is informative only. It is recommended that you conduct your own inspection prior to purchase. There is no warranty, express or implied and no warranty of fitness or merchantability.

# Diversified Power, Inc.

## Concrete Pump Truck Condition Report



The information contained in this report is informative only. It is recommended that you conduct your own inspection prior to purchase. There is no warranty, express or implied and no warranty of fitness or merchantability.