

[«Back to Inspection Results](#)**SPECIFICATIONS****2004 CATERPILLAR D6RIIXL****Customer Owned Certified****TRACK TYPE TRACTORS**

Inspection Number:	699021	Serial #:	AAX00806
Date Created:	06/16/2010 09:44:17 AM CDT	Engine Serial #:	4zf13834
Last Updated:	06/16/2010 01:01:01 PM CDT	Transmission Serial #:	N/A
Originated By:	Michael Borst	SMU/Hrs:	3012
Inspector:	Michael Borst	Last Scheduled Oil Sample:	N/A
Reviewer:	N/A	Last Cat Track System Inspection:	N/A
Salesman:	N/A	Last Preventative Maintenance:	N/A
Location:	GRAND RAPIDS, Michigan, United States	Recommendation:	repair and sell
Asking Price:	N/A	Final Price:	N/A

Client

Name: Krystyn Baran
Company: Michigan Cat
Position: Used Equipment Administrator
Email address: Krystyn.Baran@michigancat.com
Telephone: 248-449-4800 x1288
Fax: 866-488-9674

State: Michigan
Country: United States

Description

machine is in fair condition. last service was at 2961 hours.

Features

- OROPS
- BLADE, SINGLE ANGLE TILT
- BLADE, SEMI U
- DRAWBAR
- HYD CONTROL
- DIFF STEER
- ENGINE ENCLOSERS

Condition**GENERAL APPEARANCE**

	Condition - Remarks	Parts	Labor
Radiator Grill & Shroud	Fair - bottom of grille slightly bent		
Eng. Enclose Hood / Stack	Fair - tip of stack bent / dented		
Fenders	Good		
Fuel Tank	Good		
Crankcase Guard / Battery Box	Good		
Draw Bar	Good		
Main Frame Welds	Fair - no visible weld defects. little play in nose pins		
Bumper	Good		

Pre-Cleaner Bowl	Good - small ding in top		
Cab or Canopy	Good		
Steps / Ladder	Good		
Grab Irons	Fair - platform handles bent, L. canopy handle bent		
Paint	Fair - faded, scratched & worn		
Hood	Good		
Stump Pans / Screens / Guards	Good		
Engine Doors	Good		
Sheet Metal	Fair - small ding in sheet metal below fuel tank, both front flood brackets bent		

	Condition - Remarks	Parts	Labor
S.O.S. Taken	No		
Cleaning Required	Yes - u/c & belly pan dirty		

SAFETY ITEMS

	Condition - Remarks	Parts	Labor
Safety Decals In Place	Yes		
ROPS	Yes		
Safety Decals Legible	Yes - decals worn, getting hard to read		

	Condition - Remarks	Parts	Labor
Horn	Good		

GAUGES, OPERATOR STATION, CONSOLE

	Condition - Remarks	Parts	Labor
Dash Console	Fair - headliner slightly damaged		
Meter	Good		
Gauges	Good		
Switches	Good		
Seat Cushion / Arm Rest	Good		
Floor Boards	Good		
EMS Panel / Warnings	Good		
Door Latches	Good		
Glass/Mirrors	Good		
Seat Belt	Good - cant read install date, looks like original belt		

	Condition - Remarks	Parts	Labor
Current Parts Manual	Yes - water damaged		
Current Safety Manual	Yes - water damaged		
Current O&MM	Yes - water damaged		
ROPS Certification Plate	Yes		
Back Up Alarm	No - not working		

	Condition - Remarks	Parts	Labor
--	----------------------------	--------------	--------------

Fuel Level	full		
------------	------	--	--

ENGINE

	Condition - Remarks	Parts	Labor
Oil Leaks	No		
Blow By	Yes - normal / light		
Knocking	No		
Compression in Radiator	No		
Water in Oil	No		
Fluid Levels OK?	Yes		
EPA Decal	Yes - 2004		

	Condition - Remarks	Parts	Labor
Anti-Freeze Color	red elc -25		
Smoke (B/D/L/W)	normal, some black under load.		

	Condition - Remarks	Parts	Labor
Turbocharger / Blower	Good		
Fuel Injection System	Good		
Governor	Good		
Engine Supports	Good		
Air Cleaners	Fair - dirty primary filter		
Exhaust / Muffler	Fair - inlet pipe cracked off, muffler is loose in place		
Operating Condition	Good		
Belts / Pulleys	Fair - belt squeals after startup		
Notes	has 1 non cat fuel filter		

COOLING SYSTEM

	Condition - Remarks	Parts	Labor
Radiator	Fair - back side of radiator partially clogged with dirt		
Coolers	Good		
Hoses	Good		
Water Pump	Good		
Fan	Good - reversable fan		
Fan Drive	Good		

	Condition - Remarks	Parts	Labor
Leaks	No		
Folded Core Radiator	No		
Modular Radiator	No		
Standard Radiator	Yes		

ELECTRICAL, STARTING AND CHARGING SYSTEM

	Condition - Remarks	Parts	Labor
Batteries / Cables	Good - 1 battery is non cat		
Starter	Good		

Alternator	Good		
Wiring	Good		
Lighting	Fair - front R. flood light loose		

	Condition - Remarks	Parts	Labor
Ether Aid	Yes - has a bottle		
Block Heater	No		

TRANSMISSION

	Condition - Remarks	Parts	Labor
Case	Good		
Controls	Good		
Seals	Good		
Torque Converter	Good		
Temp / Pressure Gauges	Good		
Lines / Fittings	Good		
Pump	Good		
Transmission - Reverse Shifts	Good		
Transmission - Forward Shifts	Good		
Operating Condition	Good		
Cooler	Good		

	Condition - Remarks	Parts	Labor
Transmission - Noisy	No		
Leaks	No		

	Condition - Remarks	Parts	Labor
Transmission Type	3 speed		

STEERING

	Condition - Remarks	Parts	Labor
Steering Linkage	Good - little play		
Steering Valves / Pumps	Good		
Differential Steer	Good		
Steering Operating Condition	Good		
Differential Steer Pump/Motor	Good		
Differential Steering Controls	Good		

BRAKE

	Condition - Remarks	Parts	Labor
Type (Pedal, Lever)	Good - pedal		
Type (Wet, Dry)	Good - wet		
Pump	Good		

Control Valve	Good		
Lines	Good		
Brake Linkage	Good		
Operating Condition	Good		
Parking Brake	Good		

	Condition - Remarks	Parts	Labor
Holding What Gear?	service brakes hold 2nd gear		

FINAL DRIVES

	Condition - Remarks	Parts	Labor
Planetaries / Differential, Ri	Good		
Housings, Left	Good		
Planetaries / Differential, Le	Good		
Housings, Right	Good		

HYDRAULICS

	Condition - Remarks	Parts	Labor
Operating Condition	Good		
Tank	Good		
Lift Cylinders	Fair - L. cylinder rod end line seeping		
Tilt Cylinder	Good		
Hose Lines	Good		
Pumps & Valves	Fair - joystick pilot valve leaking slightly		
Control Linkage	Fair - little play, machine puts on downforce while in float position.		
Notes	non cat hydraulic filter leaking		

	Condition - Remarks	Parts	Labor
Leaks	Yes		

BLADE

	Condition - Remarks	Parts	Labor
Face / Moldboard	Good - small dings		
Push Arm	Good		
Trunnions	Fair - little play, shims remain		
Tilt Arms	Good - minor play		
Cutting Edge & Bits	Good - has not been flipped		
Notes	blade s/n 1wp04068 model D6SU		

RIPPER / GRAPPLE / WINCH

Notes	auxillary lockout knob siezed		
-------	-------------------------------	--	--

	Condition - Remarks	Parts	Labor
Mechanical Winch	No		
Hydraulic Winch	No		

	Condition - Remarks	Parts	Labor
Track Frame - Left	Good - front guards slightly bent		
Track Frame - Right	Good - front guards slightly bent		

	Condition - Remarks	Parts	Labor
Pins & Bushings Turned?	No - RBT		

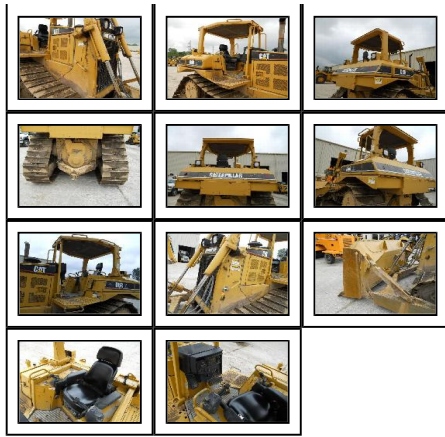
	Measurement (L)	Measurement (R)	% Worn (L)	% Worn (R)	Total Potential Hours (L)	Total Potential Hours (R)
Pins & Bushings (External)	69mm	69mm	30	30		
Track Shoes (Width)	24"	45mm	75	75		
Idlers Front	35mm	37mm	110	118		
Idlers Rear	29mm	31mm	86	94		
Carrier Rollers Front	168mm	165mm	72	78		
Links	122.5mm	122.5mm	72	72		
Segments	visual	estimate	20	20		
Track Roller 1	30mm	30mm	80	80		
Track Roller 2	29mm	29mm	76	76		
Track Roller 3	29mm	29mm	76	76		
Track Roller 4	28mm	28mm	72	72		
Track Roller 5	28mm	28mm	72	72		
Track Roller 6	29mm	29mm	76	76		
Track Roller 7	31mm	31mm	84	84		
Average Life Remaining	25% average life remaining					

	Condition - Remarks	Parts	Labor
Link Part Number	195-6515. links are scalloped		
Equalizer Bar	all 3 bushings have a little play		
Notes	tracks slightly loose.		

Photos

Click thumbnails to enlarge.





Caterpillar Confidential: Green. Copyright © 2010, Caterpillar Inc. All Rights Reserved.