

Diversified Power, Inc.

Off-Road Haul Truck Condition Report

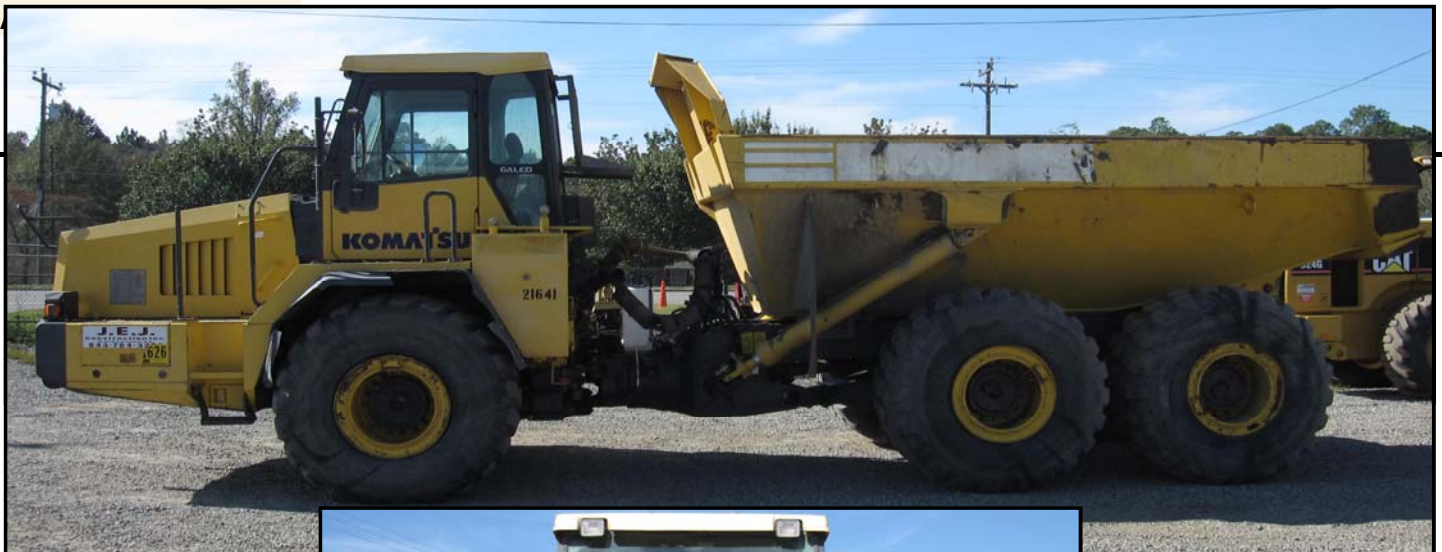
Inspection Date 11/4/2009		Equipment # MC853
Make: Komatsu	Model: HM300-1	Year: Mileage: 26,475
Type of Equip.: off road dump	Hour Meter: 5721	Serial # KMTHM001E26001318
Ratings are : Not Applicable, Excellent, Good, Satisfactory, Fair, Poor		Comments
Overall Appearance:	Satisfactory	
Operating Condition:	Satisfactory	Operator display has several codes on screen.
Engine:		Fuel system on engine leaks down. Engine runs normally, hard to start initially. Fuel system must be primed before engine will start. Engine model SAA6D125E-3
Run/Start:	yes	
Brand:	Komatsu	
Liters:		
Horsepower:	335	
Battery:	Fair	
Oil leaks:	yes	
Engine Brake:	n/a	
Cab Interior:		
Interior:	Satisfactory	
Air Conditioner:	Satisfactory	
Seat:	Satisfactory	
Heater:	Satisfactory	
Air Ride Cab:	n/a	
Tilt Wheel:	Satisfactory	
Truck:		Exhaust pipe top rusted through. Brakes operate normally. Planetary seal leak on middle axle on left side. Fender flares on both sides broken. Hydraulic level low.
Sheet Metal:	Satisfactory	
Paint:	Satisfactory	
Drivetrain:	Satisfactory	
Steering:	Satisfactory	
Transmission:		Transmission shifts properly. Transmission has several oil leaks.
Type:	powershift	
# of Speeds:	6F, 2R	
Oil leaks:	yes	
Bed:		
Condition:	Satisfactory	
Pins & Bushings:	Satisfactory	
Cylinders:	Satisfactory	

Condition Report continued on Page 2

The information contained in this report is informative only. It is recommended that you conduct your own inspection prior to purchase. There is no warranty, express or implied and no warranty of fitness or merchantability.

Diversified Power, Inc. Off-Road Haul Truck Condition Report

	Inspection Date	11/4/2009	Equipment #	MC853	
Make:	Komatsu	Model:	HM300-1	Year: 0 Mileage: 26475	
Type of Equip.:	off road dump	Hour Meter:	5721	VIN: KMTHM001E26001318	
1st Axle:	*Percentages are left side then right side. All tires weathercracked.				
Tire Size:					750/65R25
Condition:					Satisfactory
Tire %:					60%
2nd Axle:	Small cuts in LH sidewall.				
Tire Size:					750/65R25
Condition:					Satisfactory
Tire %:					60%
3rd Axle:	Small cuts in LH and RH sidewall.				
Tire Size:					750/65R25
Condition:					Satisfactory
Tire %:					60%



The information contained in this report is informative only. It is recommended that you conduct your own inspection prior to purchase. There is no warranty, express or implied and no warranty of fitness or merchantability.

Diversified Power, Inc.

Off-Road Haul Truck Condition Report

Inspection Date	11/4/2009	Equipment #	MC853				
Make:	Komatsu	Model:	HM300-1	Year:	0	Mileage	26475
Type of Equip.:	off road dump	Hour Meter:	5721	VIN:	KMT HM001E26001318		



The information contained in this report is informative only. It is recommended that you conduct your own inspection prior to purchase. There is no warranty, express or implied and no warranty of fitness or merchantability.

Diversified Power, Inc.

Off-Road Haul Truck Condition Report

Inspection Date	11/4/2009	Equipment #	MC853				
Make:	Komatsu	Model:	HM300-1	Year:	0	Mileage:	26475
Type of Equip.:	off road dump	Hour Meter:	5721	VIN:	KMT HM001E26001318		

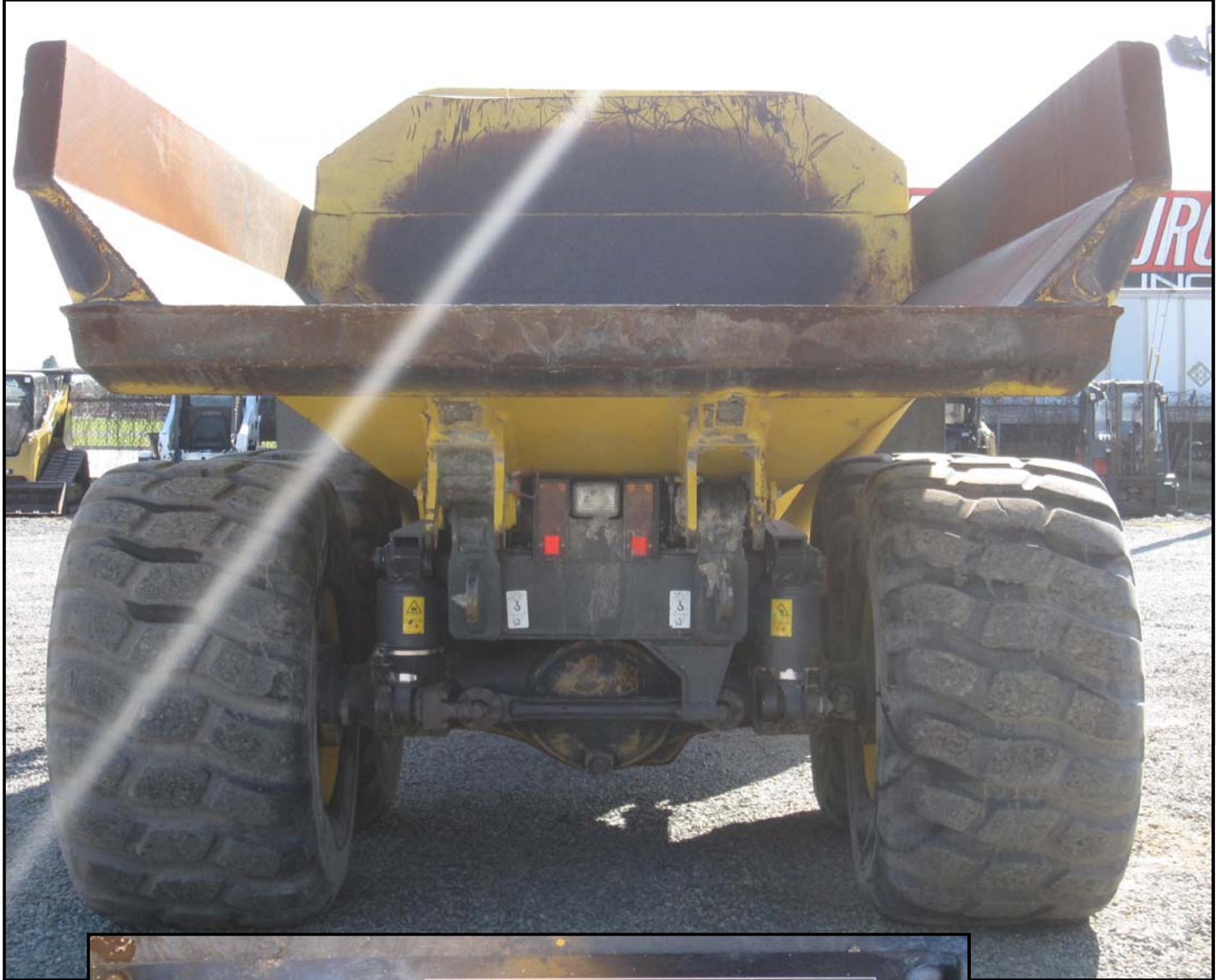


The information contained in this report is informative only. It is recommended that you conduct your own inspection prior to purchase. There is no warranty, express or implied and no warranty of fitness or merchantability.

Diversified Power, Inc.

Off-Road Haul Truck Condition Report

Inspection Date	11/4/2009	Equipment #	MC853
Make: Komatsu	Model: HM300-1	Year: 0	Mileage: 26475
Type of Equip.: off road dump	Hour Meter: 5721	VIN: KMTHM001E26001318	

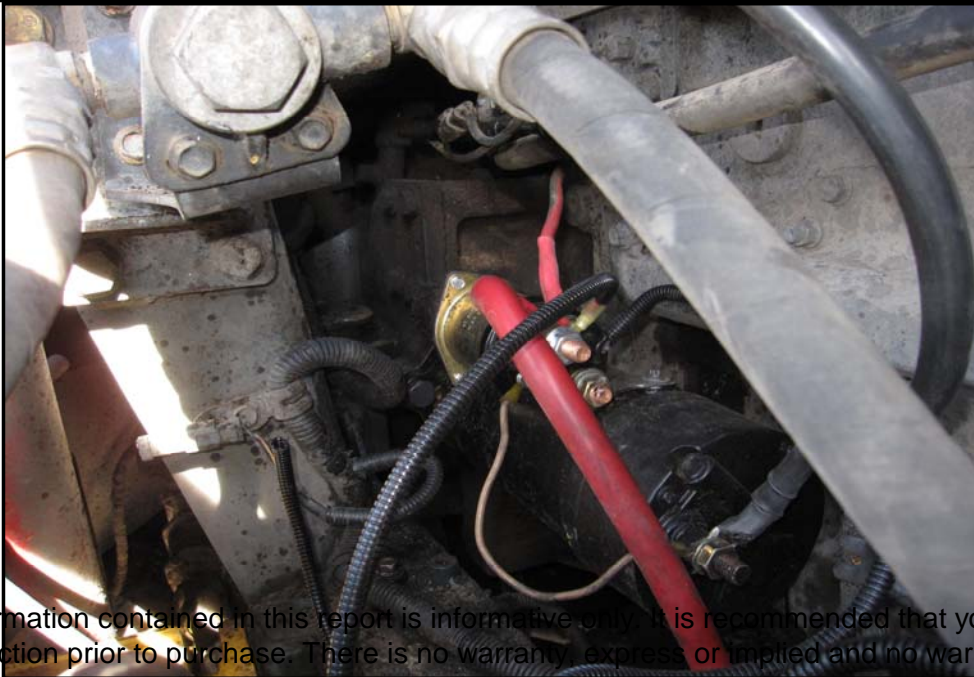
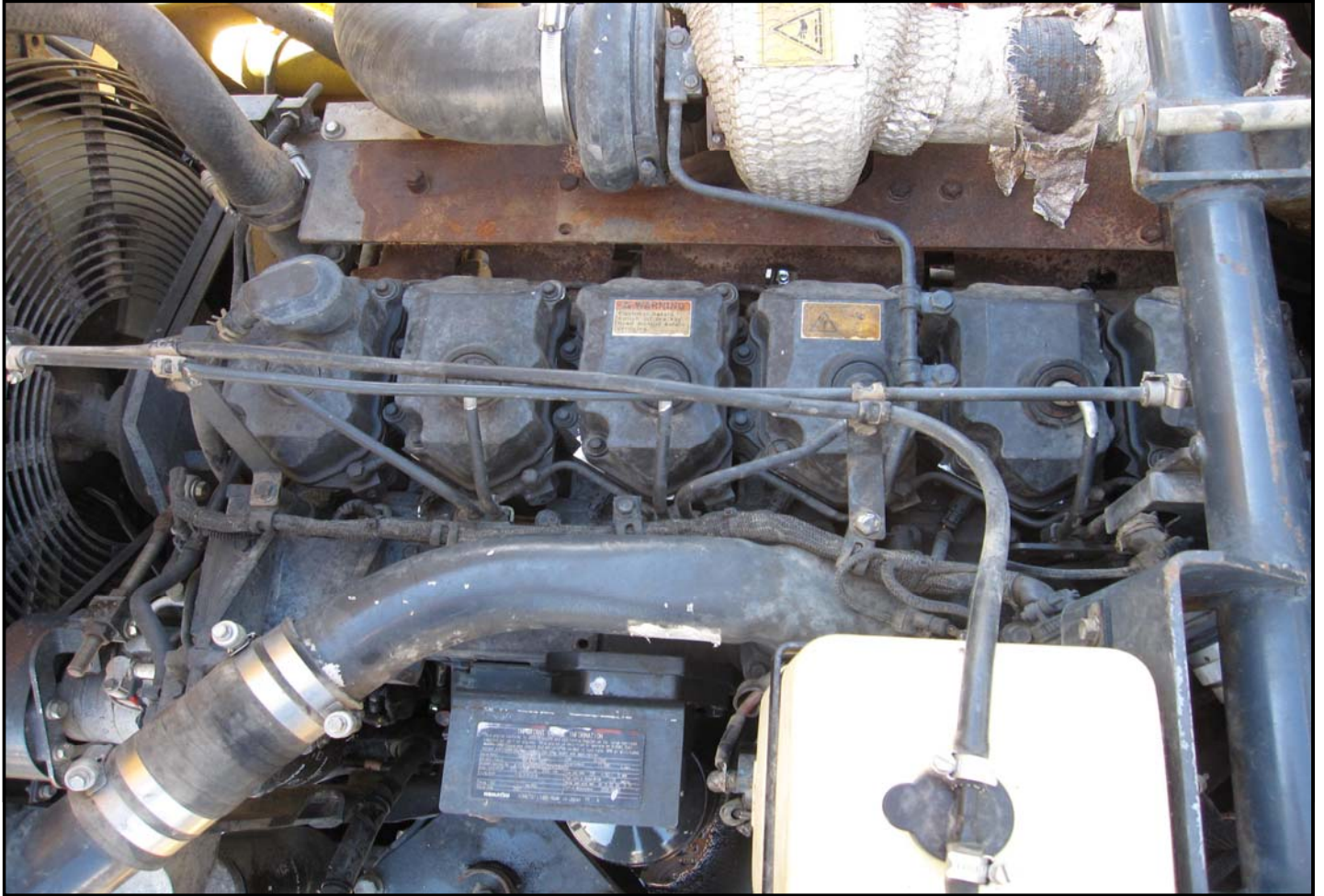


The information contained in this report is informative only. It is recommended that you conduct your own inspection prior to purchase. There is no warranty, express or implied and no warranty of fitness or merchantability.

Diversified Power, Inc.

Off-Road Haul Truck Condition Report

Inspection Date	11/4/2009	Equipment #	MC853				
Make:	Komatsu	Model:	HM300-1	Year:	0	Mileage:	26475
Type of Equip.:	off road dump	Hour Meter:	5721	VIN:	KMTHM001E26001318		

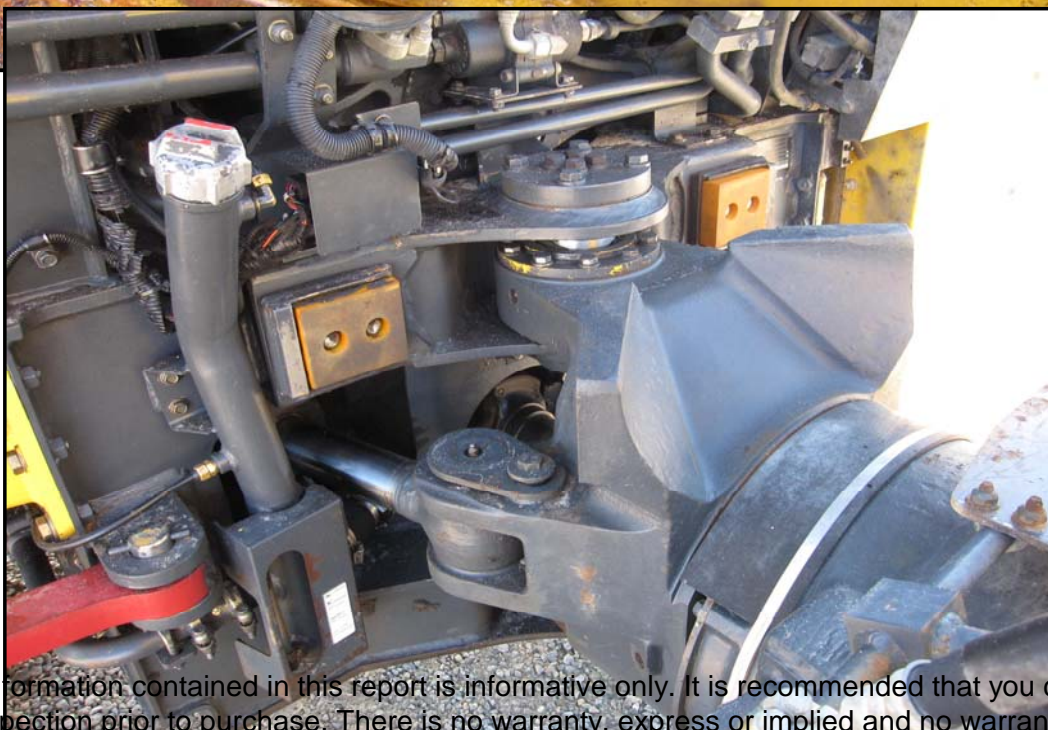


The information contained in this report is informative only. It is recommended that you conduct your own inspection prior to purchase. There is no warranty, express or implied and no warranty of fitness or merchantability.

Diversified Power, Inc.

Off-Road Haul Truck Condition Report

Inspection Date	11/4/2009	Equipment #	MC853
Make:	Komatsu	Model:	HM300-1
		Year:	0
		Mileage:	26475
Type of Equip.:	off road dump	Hour Meter:	5721
		VIN:	KMTHM001E26001318



The information contained in this report is informative only. It is recommended that you conduct your own inspection prior to purchase. There is no warranty, express or implied and no warranty of fitness or merchantability.

Diversified Power, Inc.

Off-Road Haul Truck Condition Report

Inspection Date	11/4/2009	Equipment #	MC853
Make:	Komatsu	Model:	HM300-1
Type of Equip.:	off road dump	Year:	0
		Mileage:	26475
	Hour Meter:	VIN:	KMTHM001E26001318
	5721		



The information contained in this report is informative only. It is recommended that you conduct your own inspection prior to purchase. There is no warranty, express or implied and no warranty of fitness or merchantability.

Diversified Power, Inc.

Off-Road Haul Truck Condition Report



The information contained in this report is informative only. It is recommended that you conduct your own inspection prior to purchase. There is no warranty, express or implied and no warranty of fitness or merchantability.

Diversified Power, Inc. Off-Road Haul Truck Condition Report



The information contained in this report is informative only. It is recommended that you conduct your own inspection prior to purchase. There is no warranty, express or implied and no warranty of fitness or merchantability.